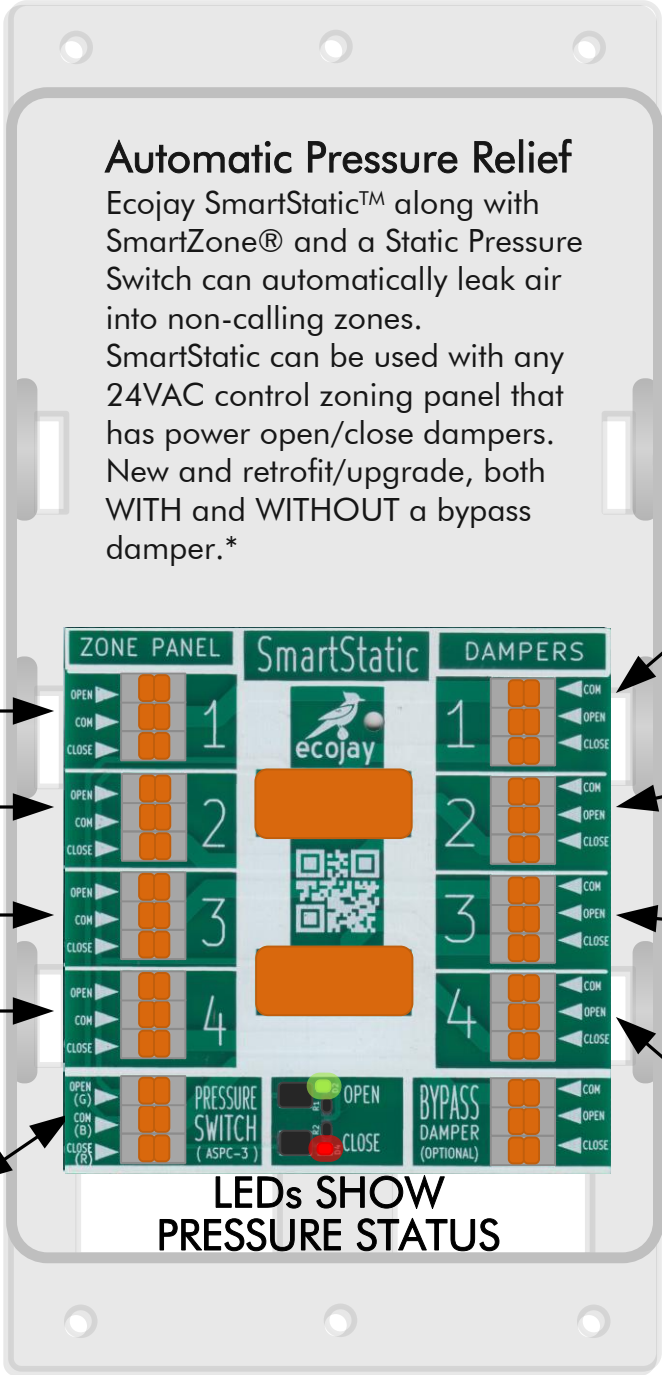


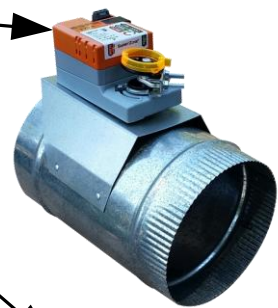
CONNECT TO SMARTZONE ...or any 24VAC ZONE PANEL



Automatic Pressure Relief

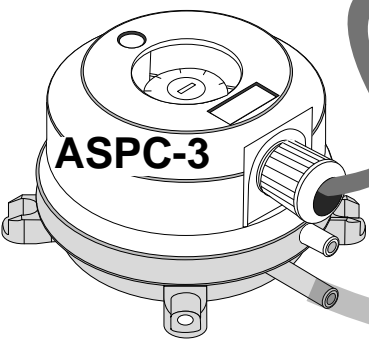
EcoJay SmartStatic™ along with SmartZone® and a Static Pressure Switch can automatically leak air into non-calling zones. SmartStatic can be used with any 24VAC control zoning panel that has power open/close dampers. New and retrofit/upgrade, both WITH and WITHOUT a bypass damper.*

CONNECT UP TO 4 ZONES FOR AUTOMATIC AIR LEAKING



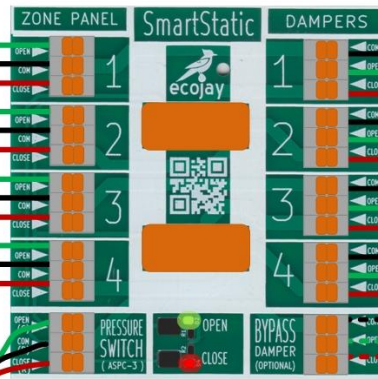
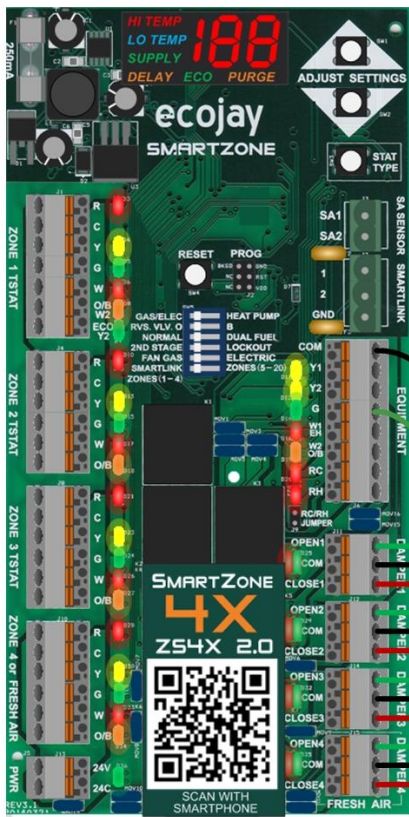
ANY 24VAC 3-WIRE DAMPERS

LEDs SHOW PRESSURE STATUS



* NOTE: Pressure relief with a zoning system is not an exact science & can be complicated. Every installation situation will be different and often take adjustment after installation for optimum results. For more information about all the methods for pressure relief go to ecoJay.com

SMARTSTATIC



USE 18 OR 20 AWG



CONNECT UP TO 5 DAMPERS PER ZONE

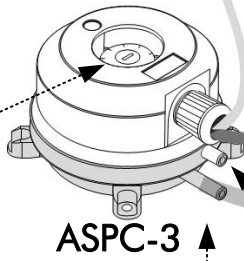


NOTE: ANY DAMPER CAN BE WIRED DIRECTLY TO ZONE PANEL IF NO LEAKING DESIRED



OPTIONALLY: A BYPASS OR ANY OTHER PRESSURE RELIEF DAMPER (DUMP ZONE) CAN BE USED IN CONJUNCTION WITH SMARTSTATIC

GREEN LED = NON-CALLING ZONES OPENING
RED LED = NON-CALLING ZONES CLOSING
(IT IS NORMAL FOR THESE TO SWITCH ON AND OFF WHEN EQUIPMENT RUNNING)



ADJUSTMENT KNOB

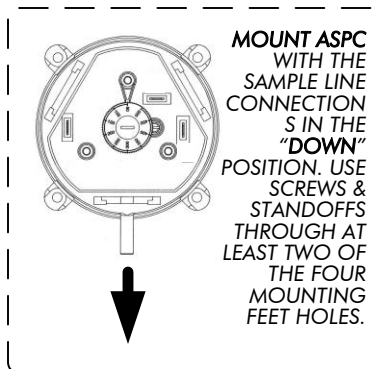
ASPC-3

CONNECT THE INCLUDED FLEXIBLE TUBING TO THE HIGH-PRESSURE INLET (P1)

REMOVE CAP: LO-INLET (P2)

PITOT TUBE

LOCATE AT LEAST 2 FEET DOWNSTREAM OF AIR SOURCE AS CLOSE TO CENTER OF THE AIRSTREAM POSSIBLE AND WITH THE INLET PERPENDICULAR TO THE AIRSTREAM. DO NOT ALLOW SUPPLY AIR TO BLOW DIRECTLY INTO THE PITOT TUBE



MOUNT ASPC WITH THE SAMPLE LINE CONNECTIONS IN THE "DOWN" POSITION. USE SCREWS & STANDOFFS THROUGH AT LEAST TWO OF THE FOUR MOUNTING FEET HOLES.

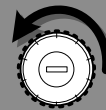
ADJUSTMENT

LESS LEAKING



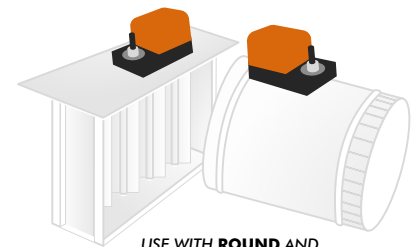
TURN KNOB CLOCKWISE TO LEAK LESS AIR INTO NON-CALLING ZONES (MAINTAIN HIGHER PRESSURE)

MORE LEAKING



TURN KNOB COUNTER-CLOCKWISE TO LEAK MORE AIR INTO NON-CALLING ZONES

MAKE VERY SMALL ADJUSTMENTS AT A TIME, THEN WAIT FOR A FEW MINUTES FOR THE PRESSURES TO BALANCE AND DAMPERS ADJUST BEFORE MAKING FURTHER ADJUSTMENTS.



USE WITH ROUND AND RECTANGLE POWER OPEN/CLOSE DAMPERS