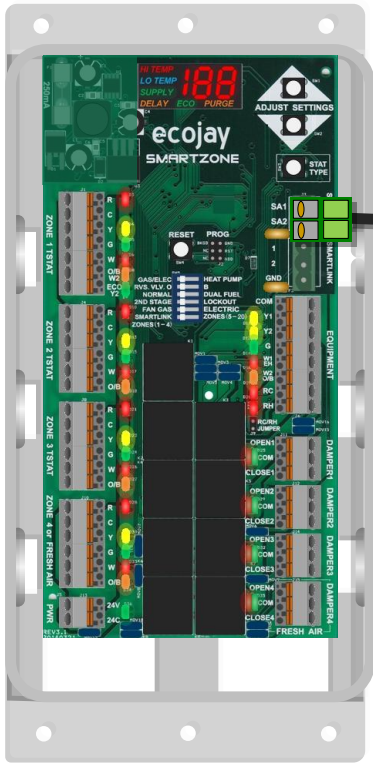


SMARTZONE®

© 2022 ECOJAY LLC
888-523-3265
ECOJAY.COM

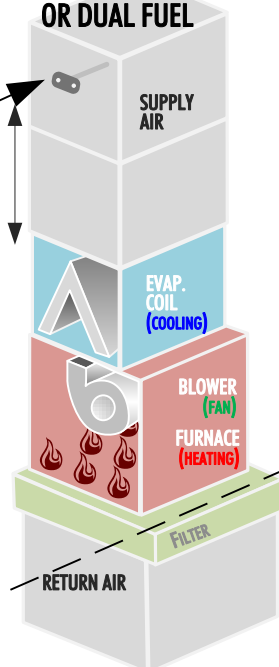
ACCESSORY



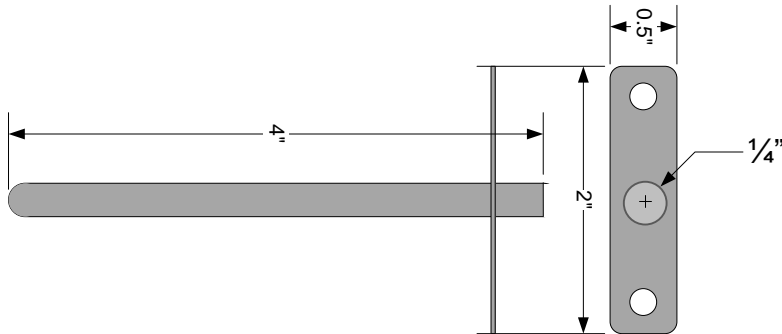
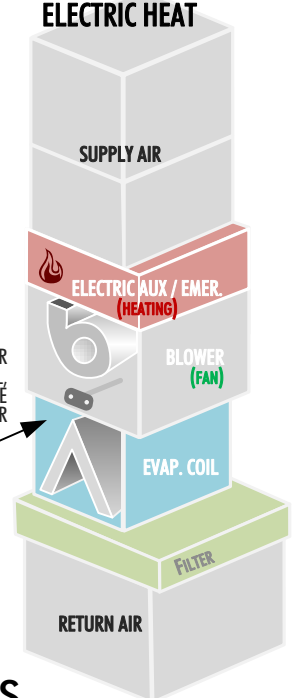
INCLUDED WITH
SMARTZONE-2X &
SMARTZONE-4X
ASAS

INSTALLATION

**GAS/ELECTRIC
OR DUAL FUEL**

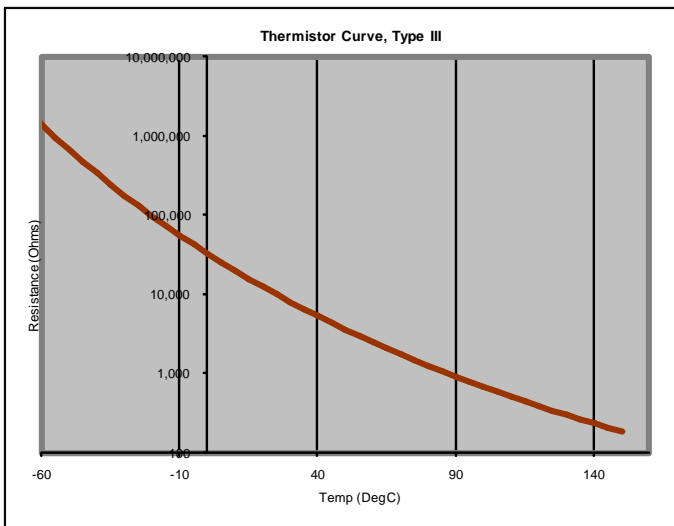


**HEAT PUMP W/
ELECTRIC HEAT**



SPECIFICATIONS

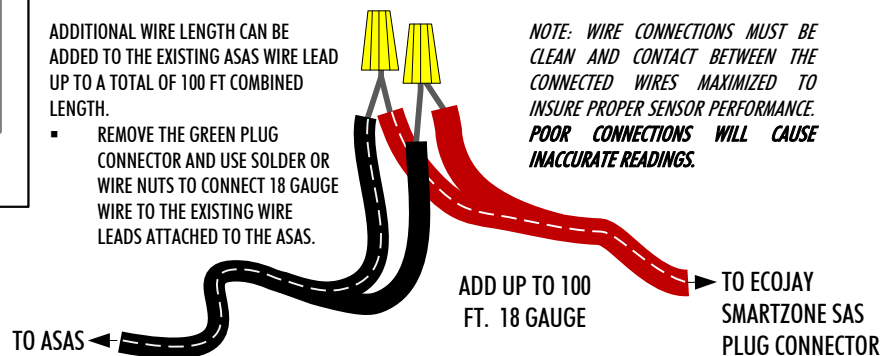
MOUNTING	MOUNT SECURELY IN ANY ORIENTATION (VERTICAL, HORIZONTAL OR DIAGONAL)
ACCURACY RANGE	0°C TO 100°C
ACCURACY	+/- 0.5°F
CASING	STAINLESS STEEL
AMBIENT RESISTANCE	10 KΩ +/- 2.5% @ 25°C
SENSOR TYPE	10K, TYPE III, NTP
MAX TEMP DISPLAY	199°F
ENVIRONMENTAL	MOISTURE RESISTANT
DIMENSIONS	LENGTH: 4.0" DIAMETER: 0.25"
MOUNTING DIMENSIONS	PLATE: 2" X 0.5" HOLES: 1/4" DIAMETER (1.5" CENTER TO CENTER)



ADDITIONAL WIRE LENGTH CAN BE ADDED TO THE EXISTING ASAS WIRE LEAD UP TO A TOTAL OF 100 FT COMBINED LENGTH.

- REMOVE THE GREEN PLUG CONNECTOR AND USE SOLDER OR WIRE NUTS TO CONNECT 18 GAUGE WIRE TO THE EXISTING WIRE LEADS ATTACHED TO THE ASAS.

NOTE: WIRE CONNECTIONS MUST BE CLEAN AND CONTACT BETWEEN THE CONNECTED WIRES MAXIMIZED TO INSURE PROPER SENSOR PERFORMANCE. POOR CONNECTIONS WILL CAUSE INACCURATE READINGS.



5 YEAR LIMITED WARRANTY ecojay.com 888-523-3265